

IFR INDOAVIS AIRNAV MANUAL (AirNavigation Manual)

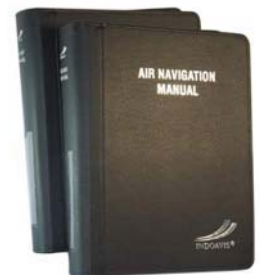
BROCIURE ANM-01A
Effective : January 2010

GENERAL DESCRIPTION

AIRNAV MANUAL are published in 4 loose leaf or perfect bound volumes covering the Conterminous Indonesia, Malaysia, Singapore. A Change Notice is published at the midpoint between revisions in bound volume format and is available on the internet for free download at the INDOAVIS web site (<http://www.indoavis.co.id>).

INFORMATION CONTENT

- I. INTRODUCTION
- II. GENERAL
- III. RULES AND REGULATION
- IV. ICAO RECOMMENDED
- V. TERMINAL NAVIGATION CHART
 1. Aerodrome Chart (AD)
 2. Standard Instrument Departure Chart (SID)
 3. Standard Instrument Arrival Chart (STAR)
 4. Instrument Approach Chart (IAP)
 5. Terminal Area Chart (TMA)
 6. En-route Chart Split



ORDER CODE / Set	PRODUCTS NAME	PRICE (Rp)		REMARK (Coverage)
		Initial + One year Revision services	Annual Revision services	
IFR ANM	2 Book AirNavigation Manual	6.400.000,-	4.850.000,-	Standard INDOAVIS

Note : Outsite Jakarta and International add price (USD 50,-)

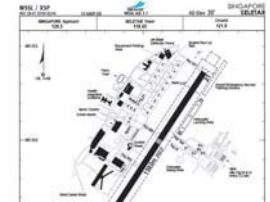
IFR High Low Altitude En-route Chart Split



The INDOAVIS IFR AIRNAV MANUAL CHART include:

- 1) **Instrument Approach Procedure (IAP) Charts.** IAP charts portray the aeronautical data that is required to execute instrument approaches to airports. Each chart depicts the IAP, all related navigation data, communications information, and an airport sketch. Each procedure is designated for use with a specific electronic navigational aid, such as ILS, VOR, NDB, RNAV, etc.
- 2) **Standard Instrument Departure Procedure (SID) Charts.** SID charts are designed to expedite clearance delivery and to facilitate transition between takeoff and en route operations. They furnish pilots' departure routing clearance information in graphic and textual.
- 3) **Standard Instrument Terminal Arrival (STAR) Charts.** STAR charts are designed to expedite ATC arrival procedures and to facilitate transition between en route and instrument approach operations. They depict preplanned IFR ATC arrival procedures in graphic and textual form. Each STAR procedure is presented as a separate chart and may serve either a single airport or more than one airport in a given geographic area.
- 4) **Aerodrome (AD) Chart.** Full page airport diagrams are designed to assist in the movement of ground traffic at locations with complex runway/taxiway configurations and provide information for updating geodetic position navigational systems aboard aircraft.
- 5) **Terminal Arrival Altitude Chart (TAA).** This is a chart the VFR Terminal Area Chart. Information shown includes airports of entry 25Nm MSC (Minimum Safe/Sector Altitude) from airport, Nav aids with the minimum obstacle Clearance.
- 6) **Area Chart.** This chart is selected ANC charts. The coverage is the same as the associated ANC. Flyway planning charts depict flight paths and altitudes recommended for use to bypass high traffic areas. Ground references are provided as a guide for visual orientation. Flyway planning charts are designed for use in conjunction with ANCs and sectional charts and are not to be used for navigation. Chart scale 1 inch = 3.43nm/1:250,000.
- 7) **IFR Enroute High and Low Altitude Charts** (Conterminous Indonesia, Malaysia, Singapore, Brunei Darussalam and Timor leste). Enroute high and low altitude charts are designed for navigation at or below and above 13,000 feet MSL. This four-color chart series includes the jet route structure; VHF NAV AIDs with frequency, identification, channel, geographic coordinates; selected airports; reporting points. Scales 1 inch = 45nm. Revised every 162 days

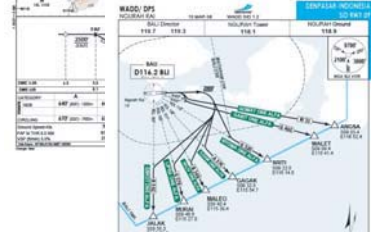
Aerodrome Chart



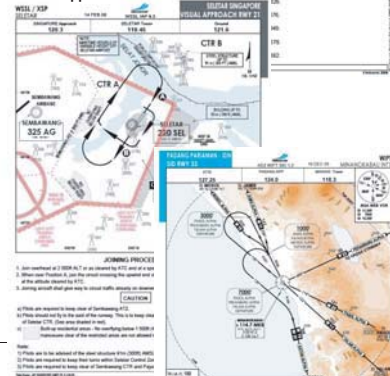
Approach Chart NDB



SID Chart



Visual Approach Chart



COVERAGE 68 AIRPORT INFORMATION :

INDONESIA (56 Airport) : AMBON, BALIKPAPAN, BANDA ACEH, BANDAR LAMPUNG, BANDUNG, BANJARMASIN, BATAM, BENGKULU, BERAU, BIAK, BIMA, CENGKARENG, DENPASAR, ENDE, GORONTALO, JAKARTA, JAMBI, JAYAPURA, KENDARI, KETAPANG, KUPANG, MAKASSAR, MANADO, MANOKWARI, MATARAM, MAUMERE, MEDAN, MERAUKE, NABIRE, PADANG PARIAMAN, PALANGKARAYA, PALEMBANG, PALU, PANGKAL PINANG, PANGKALAN BUN, PEKANBARU, PONTIANAK, RENGAT, SAMARINDA, SAMPIT, SEMARANG, SINGKEP, SOLO, SORONG, SURABAYA, TAMBOLAKA, TANGGERANG, TANJUNG PANDAN, TANJUNG, PINANG, TARAKAN, TERNATE, TIMIKA, UTAROM, WAINGAPU, WAMENA, YOGYAKARTA

MALAYSIA (6 Airport) : KERTEH, SERAWAK, SULTAN ISMAIL PENANG, IPOH, SEPANG

SINGAPORE (2 Airport) : SELETAR, CHANGI

AUSTRALIA (1 Airport) : DARWIN

PHILIPPINES (1 Airport) : DAVAO

PAPUA NEW GUINEA (1 Airport) : VANIMO

TIMOR LESTE (1 Airport) : PRESIDENTE NICOLAU LOBATO



Note : Additional airport not listed above is also available, Please contact us for further information

PT. INDOAVIS NUSANTARA

Geo-Informatics and Aeronautical Information Support



2nd Floor Terminal Building A-02/PK
Halim Perdana Kusuma Int'l Airport Jakarta 13610, INDONESIA
Ph : 62-21 808 80028 - 62.21 912 60023
Fax : 62-21 809 7242
e-mail : info@indoavis.co.id & indoavis@telkom.net
<http://www.indoavis.co.id>